

TEE



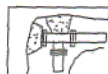
CROSS



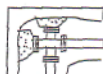
WYE



PLUG OR CAP



TEE



CROSS



BEND

1. CONCRETE THRUST BLOCKING TO BE POURED AGAINST UNDISTURBED EARTH.
2. KEEP CONCRETE CLEAR OF JOINT AND ACCESSORIES. WRAP IN HEAVY PLASTIC.
3. THE REQUIRED THRUST BEARING AREAS FOR SPECIAL CONNECTIONS ARE SHOWN ENCIRCLED ON THE PLANS: E.G. (15) INDICATES 15 SF BEARING AREA REQUIRED.
4. IF NOT SHOWN ON THE PLANS, THE REQUIRED BEARING AREAS AT FITTINGS SHALL BE AS INDICATED BELOW. ADJUST AS NECESSARY TO CONFORM TO THE TEST PRESSURE(S) AND ALLOWABLE SOIL BEARING STRESS(ES) STATED IN THE SPECIAL SPECIFICATIONS AND APPROVED BY ~~WINSTON-DILLARD WATER DISTRICT~~.
5. BEARING AREAS AND SPECIAL BLOCKING DETAILS SHOWN ON PLANS TAKE PRECEDENCE OVER BEARING AREAS AND BLOCKING DETAILS SHOWN ON THIS STANDARD DETAIL.

FITTING SIZE	TEE, WYE, PLUG OR CAP	BEARING AREA OF THRUST BLOCKS IN SQ. FT.			
		90° BEND; PLUGGED CROSS; TEE PLUGGED ON RUN	45° BEND	22 1/2° BEND	11 1/4° BEND
4	1.0	1.4	1.0	---	---
6	2.1	3.0	1.6	1.0	---
8	3.8	5.3	2.9	1.5	1.0
10	5.9	8.4	4.6	2.4	1.2
12	8.5	12.0	6.6	3.4	1.7
14	11.5	16.3	8.9	4.6	2.3
16	15.0	21.3	11.6	6.0	3.0

ABOVE BEARING AREAS ARE BASED ON TEST PRESSURE OF 150 PSI AND AN ALLOWABLE SOIL BEARING STRESS OF 2000 PSF. TO COMPUTE BEARING AREAS FOR DIFFERENT TEST PRESSURES AND SOIL BEARING STRESSES, USE THE FOLLOWING EQUATION: TO BE CALCULATED BY THE

ENGINEER

$$\text{BEARING AREA} = (\text{TEST PRESSURE} / 150) \times (2000 / \text{SOIL BEARING STRESS}) \times (\text{TABLE VALUE})$$

THRUST BLOCK DETAIL

SHEET
B